



Age Friendly
IRELAND

Ireland's National Age Friendly Recognition & Achievement Awards 2025

23rd October 2025
The Galmont Hotel, Galway



**Comhairle Cathrach
na Gaillimhe**
Galway City Council



Comhairle Chontae na Gaillimhe
Galway County Council



comhairle chontae na mí
meath county council



Funding support for Ireland's National Age Friendly Recognition and Achievement Awards kindly provided by Galway City Council and Galway County Council



Comhairle Chontae na Gaillimhe
Galway County Council



Comhairle Cathrach
na Gaillimhe
Galway City Council



Age Friendly
IRELAND



comhairle chontae na mí
meath county council



Age Friendly
GALWAY

Welcome



Cllr Mike Cubbard
Mayor
Galway City Council



Cllr David Collins
Cathaoirleach
Galway County Council



Good evening, and a very warm welcome to Galway, the beautiful City of the Tribes.

As Mayor of the City of Galway and Cathaoirleach of Galway County, we welcome our nominees, distinguished guests, colleagues, and friends here tonight.

It is our honour to host this year's National Age Friendly Recognition and Achievement Awards. This evening offers an opportunity to recognise a diverse range of age friendly initiatives from around the country that make Ireland a great place in which to grow old.

Galway is a wonderful city and county in which to live, work, visit, and of course, to grow old in; as we look out over the banks of Lough Atalia, reaching out to the shores of Galway Bay and the Atlantic Ocean beyond, we are reminded of the stunning natural beauty of our surrounds. With the phenomenal mountain landscape of Connemara to the north, stunning limestone karst areas to the south, and our incomparable island communities to the west, Galway is a place that stays with you long after you have left the county boundaries.

We are also known the world over for our friendly and welcoming people, arts, culture and heritage. In 2024, over 2.4 million tourists visited Galway, attracted by our rich offerings including festivals, heritage sites, outdoor activity and adventure, shopping, food and craft. 33% of these visitors were over the age of 55, keen to explore the Wild Atlantic Way and the city and county that it encompasses.

While you enjoy your stay here, we advise you to make the most of your visit; invest in good quality rain gear and walk the famous Salthill Prom, visiting Galway City Museum on your way or filling up on the Galway Food Tour. Plan an excursion to the impressive Kylemore Abbey or go wild in Connemara National Park. A delicious and hearty meal, followed by a drink and some world-class trad music in one of the cosy local pubs is a must.

We wish you all the very best of luck tonight, and congratulations once more to our remarkable nominees. We hope that you enjoy your stay in Galway and that you enjoy all that the city and county have to offer.

Gaillimh abú!

Fáilte



Liam Conneally
Chief Executive
Galway County Council

Galway is an established arts and culture hub for the West; our Age Friendly cultural initiatives include initiatives in nursing homes, community and family resource centres, and the streets of Galway City and towns and villages in the county. You might turn a corner and encounter a street feast, a tea dance, film screening, or a drumming workshop – proving that creativity and imagination have no age limit.

We are particularly proud that both Galway City and County are represented so well by two shortlisted projects as part of the Awards. Galway County Climate Action Team and climate educator and activist Jacinta Barrins are showcasing the '60+ Climate Drive' under the Age Friendly Community Innovation Award, evidencing the local authority's commitment to sustainability.

The 'Positive Ageing Week Local Heroes Campaign' is an interagency collaboration led by COPE Galway that recognises the contributions of older people in their communities. This project is a celebration of our volunteers, carers, friends and family members that make Galway such a warm and welcoming place.

We sincerely hope you all enjoy a memorable night and your stay here in Galway and we wish you continued success with all your work through the Age Friendly programme.



Leonard Cleary
Chief Executive
Galway City Council

As Chief Executives of Galway City and County Councils and Joint Chairs of the Age Friendly Alliance, we welcome you to the 2025 National Age Friendly Recognition and Achievement Awards.

We are incredibly proud to host this year's awards and to demonstrate Galway's appreciation of our older residents and visitors alike. In the coming weeks, Galway City and County will launch our second joint Age Friendly Strategy, with a vision to make our City and County "a great place to grow old in".

We wish to acknowledge the achievements of the City and County OPC's, our partners on the Age Friendly Alliance, and the many organisations and community groups that help to realise this vision.

Our Council staff work hard to create age friendly places to live, work and visit. High-quality housing schemes that include Universal Design principles are built in Claregalway, Ballybane and Knocknacarra. Age friendly seating and sheltered bus stops serve communities in Cnoc Indreabhán, Casla, and across the city. We are proud to say that every Library in Galway City and County is designated as age friendly.

Communities here in the city and throughout the county can enjoy programmes of events and activities designed with older people in mind. You can participate in Age Friendly Sports initiatives which encourage physical activity and well-being such as Walking Football and Chair Yoga, or enjoy a stroll around the recently refurbished Palace Grounds Community Park in Tuam, where you can pick up activator pole walking.

Age Friendly Ireland

Meath County Council

A Shared Service Function of Local Government

The overarching goal of Ireland's Age Friendly Programme is that every local authority area in Ireland will be a great place in which to grow old. Underpinning the Age Friendly Programme is the core principle that older people are a most valuable resource to their communities and to our society in general. For this reason, the voice of the older person is at the very heart of the Programme.

Ireland's Age Friendly Programme is part of a worldwide, World Health Organisation (WHO) inspired movement which embraces the challenges and opportunities that our ageing population presents by facilitating local authorities to take the lead on changing thinking about ageing, and how services are planned and delivered. In 2006, the WHO developed a framework involving eight domains of liveability which influence our quality of life as we age. The availability and quality of these eight community features impacts on the health and wellbeing of older adults. Age Friendly programmes across Ireland devise and implement actions which support communities in becoming more inclusive of older people by addressing their concerns under the **eight domain areas**.

Ireland's Age Friendly Programme is coordinated by Age Friendly Ireland, an appointed shared service of local government hosted by Meath County Council. The national Age Friendly Ireland Shared Service brings together, supports and provides technical guidance to the 31 local authority led, multi-agency Age Friendly Programmes. At City and County level it is developed through cooperation and partnership of older people with government agencies and service providers working side by side. Under the leadership of the local authority Chief Executives and senior managers, governance is anchored in the multi-agency Age

Friendly alliances, supported by broadly representative older peoples' councils engaged as co-design partners. The Age Friendly City and County Alliances provide the collaborative framework to involve senior leaders from key stakeholders such as the Local Authority, HSE, An Garda Síochána, Chambers of Commerce, community sector, third-level institutions, and others, who have sufficient influence and resources to develop and deliver ambitious and collaborative Age Friendly Programmes.

Ireland's Age Friendly Programme aims to make sure that as we age, we can all:

- ▶ have a real say in what happens in our own lives and what happens in the areas in which we live;
- ▶ enjoy good health, excellent services, and live in a safe environment;
- ▶ participate fully in everything that is going on in our communities, cities and counties.

There is no doubt that the aims of Ireland's Age Friendly Programme are ambitious and require a change in how we think about ageing. The Programme asks us to imagine new ways in which service providers and other organisations can work together to deliver improvements in supports and services that not only benefit older people but the community as a whole. The Programme is underpinned by an approach where plans are developed and agreed locally and where the agencies involved agree to be accountable to each other and to older people at local level.

Tráthnóna maith agus fáilte chroíúil romhat chuig Cathair na dTreabh, Gaillimh.



Kieran Kehoe
Chief Executive
Meath County Council

Foreword

Ageing communities are one of the most significant achievements of our society. In Ireland in the 1920s, life expectancy at birth was under 58 years. Today, our average life expectancy is 82.6 years, making Ireland the fifth highest in the EU.

People are living longer thanks to better medical interventions, better nutrition and an increased focus on health promoting behaviours. Projects and initiatives like the ones we are here to celebrate tonight make a huge contribution to older people having longer, happier and healthier lives.

We operate the national Age Friendly Office under the banner of the World Health Organisation's Global Network for Age Friendly Cities and Communities. This international community encourages us to adapt to the needs of an ageing population. Our ambition is to develop a fully Age Friendly Society, an Ireland where all aspects of services, infrastructure, buildings, communication - and social attitudes towards ageing - are inclusive and respectful of older people. By virtue of adapting services for older people who have varied needs, we are building a more inclusive society for everyone. The core principles of being Age Friendly are very much aligned with similar programmes of work to support and include people with disabilities, with dementia, autism, and many other domains.

The Age Friendly National Office is hosted by Meath County Council on behalf of the local government sector. It involves all local authorities working together, with multisectoral partners to deliver on a strategic vision that centres on a positive experience of ageing.

Local government plays a key role in shaping our communities. We provide over 1,000 services across a number of departments. We use local government indicators to help us understand how effective we are in the services we deliver. On a more macro level, how do we measure how successful we are as a society?

Economists will talk about Gross Domestic Product (GDP), or we can look at Labour Force Participation rates, Unemployment Rate, Education levels, or other measures. But having an understanding of the value of social wellbeing, can give a fuller picture of how successful we are as a society. How we treat and respect older people in our communities is a key indicator of how successful we are as a society, representing our social values.

The National Age Friendly Recognition Awards is one of our flagship events to celebrate and acknowledge the stellar work being delivered in support of ageing communities, all over Ireland. The initiatives shortlisted here tonight were selected as 'best in class' from hundreds of submissions. The categories for the Awards are aligned with the eight domains set out in the World Health Organisation Framework.

The rigorous judging process assessed each shortlisted project in terms of its impact on older people, innovation, scalability and sustainability.

These awards help us to reinforce the messaging about what needs to change in Ireland to be fully Age Friendly – whether that's designing homes with Age Friendly features, transport options that enable older people to travel independently, health and wellbeing activities, and businesses that accommodate the needs of older customers.

I would like to express my deep gratitude to our wonderful panel of judges who had no easy task in assessing the applications and who have spent time with each project to understand what's happening on the ground, and hear your story in your own words.

The Judges' Special Recognition Award, kindly sponsored by IPB Insurance, will acknowledge a specific organisation or project that has made a particular impression on the judges for their significant supports for ageing communities.

I would like to thank Galway County and Galway City Councils, under the leadership of Chief Executives Liam Conneally and Leonard Cleary, for hosting the Awards this year. We are truly delighted to be here tonight in the beautiful Galmont Hotel to showcase the best Age Friendly initiatives in Ireland.

I congratulate each and every one of you here tonight, and thank you for the role you are playing in the international Age Friendly movement, and in realising our shared vision of an Age Friendly Ireland.

Key Note Speaker



Kieran O'Donnell, TD
Minister of State

Kieran O'Donnell is Minister of State at the Department of Health with special responsibility for Older People and the Department of Housing, Local Government and Heritage with special responsibility for Housing. He was appointed to these roles on 29th January 2025.

He previously served as Minister of State with responsibility for the Office of Public Works since April 2024, and as Minister of State for Local Government and Planning at the Department of Housing, Local Government and Heritage from December 2022 to April 2024.

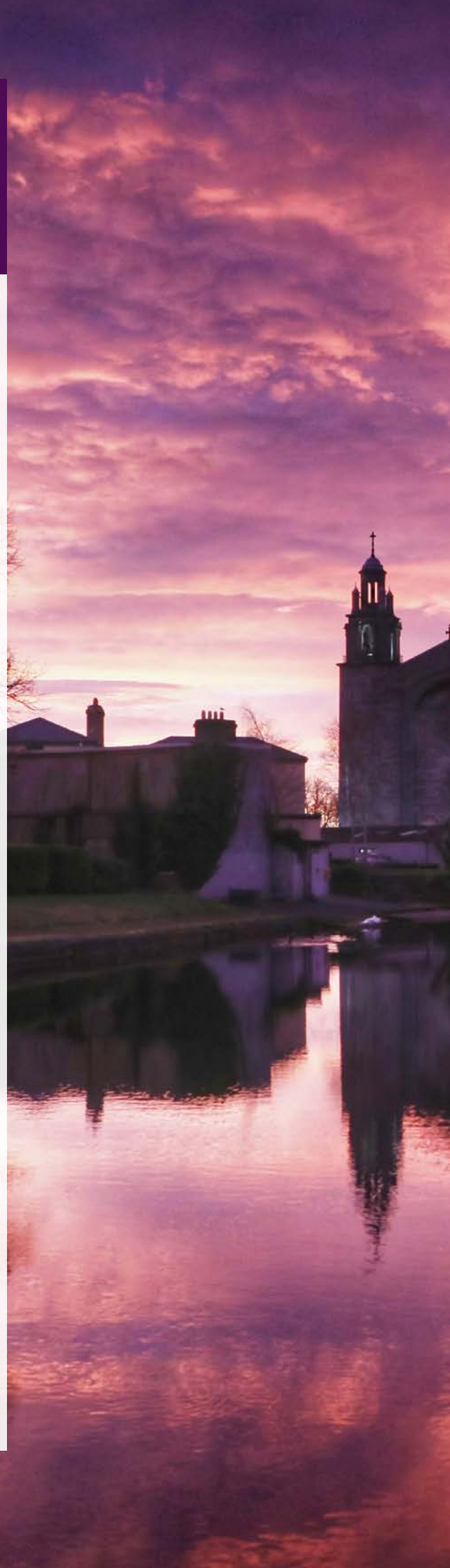
Minister O'Donnell is the Fine Gael TD for Limerick City Constituency. First elected in May 2007, he was re-elected in 2011, 2020 and 2024.

He has served as:

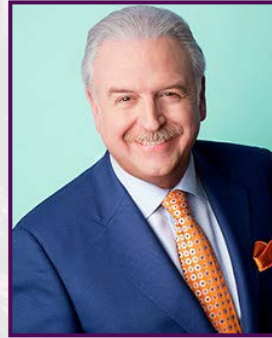
- Chairperson of the Oireachtas Transport and Communications Committee
- Vice-Chairperson of the Public Accounts Committee (PAC)
- Member of the Banking Inquiry
- Member of the Oireachtas Finance and Budgetary Affairs Committees
- Spokesperson on Finance for Fine Gael

He was elected to the Seanad in 2016. Prior to his entry into national politics, he was elected to Limerick County Council in 2004.

Minister O'Donnell is a Chartered Accountant, with many years of experience with his own practice and is a business studies degree graduate from the University of Limerick (UL).



Master of Ceremonies



Marty Whelan
Master Of Ceremonies

Arguably one of Ireland's favourite broadcasters, Marty Whelan is a much-loved Award-winning radio and TV personality who frequently Hosts and MCs conferences and events all over Ireland.

Marty's professional and relaxed manner keeps audiences entertained while also taking on the serious business of presenting Awards and keeping your event on track.

As well as charity work, and being seen and heard on RTÉ radio and television, Marty has presented a variety of shows.

Every morning Marty takes the chill out of early morning starts with music, news, weather and travel updates on the popular show, 'Marty in the Morning' on RTE Radio. Marty is also a previous winner of the VIP Style Award for Most Stylish Man and recently launched his memoir, 'That's Life' in Dublin.

Best known as a broadcaster on Lyric FM, co-host of Winning Streak and a seasoned Eurovision commentator he has also presented Open House, Celebrity Bainisteoir and many more!



Ireland's National Age Friendly Recognition and Achievement Awards Selection Panel



Pat Dowling, Chairperson

Pat Dowling, a native of West Limerick and graduate of the University of Limerick, now calls Kilkee his home after he and his wife, Rose, moved there in November 2016. Pat has dedicated over 25 years to Local Government leadership. He served as Chief Executive of Clare County Council from 2016 until his retirement in late 2024, following his role as Deputy Chief Executive of Limerick City and County Council, where he oversaw the merger of both councils under the Local Government Reform Act 2014.

During his tenure in Clare, Pat championed rural development, digital innovation, tourism—including the transfer of Shannon Heritage sites—and secured significant increases in capital investment. He previously led housing and regeneration programmes in Limerick and played a pivotal role in national local government reform.

Pat has been deeply involved with Age Friendly Ireland, most recently serving as Chair of the National Network of Age Friendly Alliance Chairs, comprising all 31 Local Authority Chief Executives and six independent chairs. In this role, he was instrumental in ensuring continued local government leadership and support for the national programme.

Beyond Local Government, Pat's career has included leadership positions with Clare Youth Service, the National Youth Council of Ireland, Macra na Feirme, and the Kildare LEADER Programme. Today, he continues his involvement with Age Friendly Ireland as Chair of the National Recognition and Achievement Awards Adjudication Panel and advisor on the future development of the awards.



Anne Haugh

Anne closed the chapter last year on a long and accomplished career in local government during which she served a total of 34 years in the local authority sector and over half of this as a Director of Service. Having worked across Clare, Limerick and Kerry local authorities, her latter years in Clare County Council saw her head up the Housing, Arts and Cultural brief but she has vast experience across a diverse range of local authority functions over the course of her career.

She holds a B.Comm degree from University of Galway as well as a Masters in Local Government Management and a Professional Cert in Governance from the Institute of Public Administration. As a board member of the National Oversight and Audit Commission (NOAC) Anne continues to contribute to the local government sector and is enjoying the variety of opportunities which this new chapter is presenting. Anne has resided in her native county of Clare throughout her career where she is married to Brian and has a daughter Shaunagh who currently lives and works in Dubai.



Madeleine Quirke

Madeleine Quirke is former CEO of Wexford Chamber having retired in 2018. Since 2007 Wexford Chamber flourished under her leadership and that of a very strong Board of Directors. Various directorships and involvements on committees and local organisations have been well served by Madeleine including Its Good 2 Talk (Wexford), Wexford Walking Trails and most recently as Sponsorship Chair of the Fleadh Executive Committee for the 2024 and 2025 Wexford Fleadh.

She has been proactive in encouraging County Wexford businesses to act responsibly in terms of giving to the community and demonstrating that business cares. An advocate for “sustainable business practices”, Madeleine places great emphasis on the environmental, economic and social impact of a company’s business practice.

Delighted to have been involved in AFI since 2023, Madeleine continues to be inspired by the innovation and volunteerism that AFI brings to communities.



Ned Gleeson

Ned Gleeson is a former County Manager/CEO of Limerick County Council. He has spent his entire career in the Local Government Service and has served in Senior Managerial positions in Tipperary, Galway and Limerick.

He has a wide range of experience in Public Service Management, Corporate Governance and Strategic Management. He has worked at the heart of Local Communities with Public Representatives and all other key Stakeholders to drive economic and social development in their areas.

He has served as a member on a number of Committees at National level including Local Government Reorganisation Groups, Co-Operation Ireland, All-Island Local Authority Forum and the Civil Defence Board. He was also Chairperson of the County and City Managers’ Association.

Ned was very involved in Local Community activities in his earlier years and believes we all have a responsibility to give back to the community when and where we can.

Ireland's National Age Friendly Recognition & Achievement Awards 2025

Galmont Hotel, Galway City
Thursday 23rd October 2025

6.00pm Registration



6.30pm Drinks Reception

7.00pm Martyr Whelan, *Master of Ceremonies*

7.10pm Welcome from
Cllr Alan Cheevers, *Deputy Mayor Galway City Council*
Leonard Cleary, *Chief Executive, Galway City Council*
Kieran Kehoe, *Chief Executive, Meath County Council | Age Friendly Ireland SS*

7.30pm Dinner and Awards Ceremony commences

7.55pm Pat Dowling,
Chair of the Age Friendly Awards Selection Panel



8.00pm Kieran O'Donnell, TD
Minister of State for Older People and Housing (Keynote Speaker)

8.10pm Presentation of Awards
Age Friendly Active & Healthy Ageing Award
Presented by
Siobhan McArdle, *Assistant Secretary, Department of Health*

Age Friendly Community Innovation Award


Presented by

Bairbre Nic Aongusa, *Assistant Secretary, Department of Rural and Community Development and the Gaeltacht*

Age Friendly Communication Award

Presented by

Anna McHugh, *Head of Corporate Communications, An Post*



Age Friendly Transport Award

Presented by

Garret Doocey, *Assistant Secretary General, Department of Transport*

8.40pm Main Meal

9.20pm Presentation of Awards

Age Friendly Housing Award

Presented by

David Kelly, *Assistant Secretary, Department of Housing, Local Government and Heritage*

Age Friendly Business Innovation Award

Presented by

Ian Talbot, *CEO, Chambers Ireland*

Age Friendly Environment Award

Presented by

Ger Craddock, *Chief Officer, Centre for Excellence in Universal Design at NDA*

Age Friendly Safety and Security Award

Presented by

Paula Hilman, *Assistant Commissioner An Garda Síochána*


Judges Special Recognition Award

Sponsored by IPB Insurance and presented by:

Graham Orr, *Director of Member & Client Relations*

Ivor Heavey, *Senior Engineer*

Jeannine Tanner, *Senior Risk Advisor*



9.50pm Dessert

10.10pm **Marty Whelan**, *MC introduces closing remarks*

CLlr David Collins, *Cathaoirleach, Galway County Council*

Catherine McGuigan, *Chief Officer, Age Friendly Ireland Shared Service*

10.45pm Musical Entertainment and Dancing





The National Age Friendly Recognition and Achievement Awards Categories

The Age Friendly Recognition and Achievement Awards showcase age friendly initiatives from around the country that are contributing to making Ireland a great place in which to grow old. This year, eight categories of awards, aligning to the WHO themes, have been chosen as they have a meaningful impact on the lives of older people in Ireland.

Age Friendly Transport Award

Sponsored by the Department of Transport

Getting to where you want to go when you want to go is so important to so many older people. This category recognises the vital difference that access to good quality and reliable transport options can make to an older person.

Projects Shortlisted in this Category

▶ **Older Voices Community Car Initiative**

County Kildare Leader Partnership

▶ **Accessible Hospital Bus Service**

Local Link Louth Meath Fingal

▶ **Kerry Cancer Support Group's Healthlink Transport**

Kerry Cancer Support Group



Older Voices Community Car Initiative

The County Kildare LEADER Partnership, CKLP, Older Voices Community Car, launched in December 2024. With the introduction of this initiative, the first of its kind in the county, older individuals can avail of transportation that current public transport does not provide due to irregular schedules or due to a lack of services in an area. Examples of clients using the service include isolated individuals or those facing mobility challenges who need help attending hospital appointments, visiting loved ones in nursing homes, attending the local Dementia Café and hospice visits etc across County Kildare. For many, particularly those

living in rural areas or experiencing reduced mobility, accessing essential services, attending appointments, and staying socially connected can be a challenge. The Community Car initiative aims to bridge this gap by offering a convenient and accessible transport solution.

Our volunteers are mostly comprised of retirees, people who have had to stop working due to illness and injury. These people have found their new calling by giving back.

Kerry Cancer Support Group's Healthlink Transport

Kerry Cancer Support Group is a not-for-profit organisation (RCN 20074159) who operate a Healthlink transport service. This is a vital, inclusive, age friendly initiative supporting individuals on their cancer journey across Kerry, West Cork, and West Limerick. The service provides free transport to treatment centres, covering over 3,000km each week and supporting an average of 35 people daily. Healthlink transport serves communities experiencing significant disadvantage, including rural isolation, poor transport infrastructure, population decline, and an ageing demographic. In 2024, 68% of service users were over the age of 65; of those, 75% were over 70, with 24 users over 80 and 7 over 90. There was an almost 50/50 mix male/female

and almost everyone finished treatment. The service reduces the stress and logistical barriers associated with travel for its service users and especially older and those more vulnerable in our communities. The service has been described as a travelling support group. Service users often describe it as a lifeline—where meaningful connections are formed, and peer support continues long after treatment ends. Aligned with the Integrated Care Model, the service exemplifies age friendly, person-centred care. It has evolved with community needs and remains deeply committed to the dignity, independence, and wellbeing of its service users.



Accessible Hospital Bus Service

The Accessible Hospital Bus Service travels along a route on a daily basis (Monday to Friday) and collects people who have hospital appointments in the Public Hospitals in Dublin. Passengers book their transport in advance, and a fully trained driver collects the passengers along the route. This bus is powered by drivers employed through Employment Activation Programmes. The bus is fully accessible with lift and low side step ensuring that everyone can travel together. Wheelchair users are collected at their house, and walking passengers meet the bus in their local town. Each person with an appointment that travels can bring someone with them making an appointment easier for everyone.

Age Friendly Active & Healthy Ageing Award

Sponsored by Department of Health and the Health Service Executive (HSE)

We are living for longer but remaining healthy and active in later years can be a real challenge. This award recognises those initiatives that optimise opportunities for good health in later years, so that older people can continue to play an active role in community life.

Projects Shortlisted in this Category

- ▶ **Positive Ageing Week – Local Heroes Campaign**
Cope Galway and Others
- ▶ **AgeWell**
Third Age
- ▶ **Live Well - A Health and Wellbeing Information Event**
Laois Age Friendly & Healthy Laois
- ▶ **Monaghan Age Friendly Hospital**
Monaghan Hospital

Positive Ageing Week – Local Heroes Campaign

We all know wonderful and inspiring older people in our communities. Older people who we see out walking every day, running and swimming. Older people who are a lifeline to families as childminders. Older people who care for other family members. Older people who volunteer, participate in Tidy Towns, host Coffee Mornings, run Active Retirement groups and so much more! The Local Heroes Campaign shines a light on these people who give so much and expect so little in return. Each year, 30 individuals are celebrated widely across social media, newspapers, radio and in a special booklet and an exhibition as Local Heroes. Real stories of positive ageing are shared with the wider community and encourage everyone to reflect on the contributions of older people in our towns and villages. The campaign is an active effort to help change attitudes about ageing and to inspire people to embrace life as they age.





Live Well - A Health and Wellbeing Information Event

The Live-Well Annual Expo is an innovative health and wellbeing initiative, designed to bridge the gap between people and the services that support them. Now in its third year, in 2025, this Annual event hosted 2,000 attendees, delivered 380 free health screenings and saw Laois County Council lead a team of over 110 service providers invested in improving the health and wellbeing of Laois citizens. Alongside several HSE departments and varied sporting bodies, the event included organisations such as Social Prescribing, LSTEP, Laois Partnership, NALA, LOETB, Vision Ireland and many more focused on the wider social factors of health. National bodies like the SEAI, RSA, Decision Support Services, and corporate partners like Google, further enriched the offering and information was delivered in a relaxed, welcoming environment, reduced stigma, encouraged interaction, and ensured attendees were informed, supported,

and connected using a socially engaging format. This included talks, demonstrations, activities, dance, singing, music, alongside a large exhibition style information Expo. What makes Live Well unique, is the collaborative team effort led by Laois County Council with the enormous number of external groups and organisers provide a low cost, engaging, vibrant, community-driven experience in multiple mediums and formats. Live Well is a truly innovative model for engaging and supporting the community in active and healthy ageing. Community connections with Laois County Council have continued throughout the year between individuals, communities, and services, ensuring older people are better informed, supported, and empowered to manage their health and wellbeing through ongoing wrap around collaborative programmes.

AgeWell

AgeWell is a community-based ageing-in-place programme that helps older adults remain well, independent, and socially connected in their own homes. The programme addresses loneliness, reduces the risk of hospitalisation, and ensures timely support through a combination of weekly peer visits, wellbeing monitoring, and coordinated follow-up. Central to the model are trained AgeWell Companions—volunteers aged 50+—who visit older people at home once a week. These visits provide companionship and a light-touch wellbeing check. Using a secure app, Companions record key observations, which are reviewed by an AgeWell Care Coordinator. Any concerns flagged are followed up, with referrals made to health, social care, or community services as appropriate. This early intervention approach allows for issues to be identified before they escalate,

reducing unnecessary use of acute services and helping people stay safe and well at home. The model is simple but powerful, combining the social impact of meaningful connection with the practical benefits of regular monitoring. AgeWell has been operating successfully in Meath, with strong outcomes in terms of reduced isolation, improved wellbeing, and positive feedback from participants and their families. It aligns with HSE and Sláintecare goals to deliver integrated, community-based, person-centred care for older people. With a scalable and replicable model, AgeWell is ready for wider rollout in partnership with local authorities, community groups, and health services. AgeWell is cost-effective, evidence-informed, and built on the belief that older people should be supported to age with dignity, connection, and purpose.

Monaghan Age Friendly Hospital

Monaghan Hospital has made significant progress in creating more welcoming and accessible facilities for older people / Service Users who use and visit the hospital. This achievement was recognised in February when the hospital was awarded “Age Friendly” status. The award highlights the hospital’s dedication to enhancing accessibility, comfort, and inclusivity, particularly for older adults and people with disabilities. This recognition is the result of a two-year programme focused on improving the service user experience, especially for older people. Monaghan Hospital is only the second hospital in Ireland to receive this distinction, following St. Luke’s General Hospital in Kilkenny, which was awarded in 2019. The accolade reflects a thorough process aligned with the World Health Organisation’s Global Network

for Age Friendly Cities and Communities principles. This effort was led collaboratively by Monaghan Hospital, the Monaghan Age Friendly Programme, Monaghan County Council, and Age Friendly Ireland, reinforcing Ireland’s commitment to more inclusive healthcare environments. Hospitals are often visited during difficult times, and the staff at Monaghan Hospital have worked tirelessly to make the facility more inviting for both patients and visitors. Key improvements with older people in mind include a new access walkway, a biodiversity sensory garden, universally designed seating, and enhanced visual contrast on kerbs to aid accessibility, internal and external murals, and fully compliant disability toilet facilities.

Age Friendly Business Innovation Award

Sponsored by Chambers Ireland

We know that creating an enjoyable and accessible environment for older consumers pays dividends for businesses. Here we recognise initiatives that strive to improve the environment for older people as consumers

Projects Shortlisted in this Category

- ▶ **Slieve Russell Hotel - Inclusive Hotel - Dementia Friendly**
Slieve Russell Hotel, Cavan
- ▶ **Gas Networks Ireland ‘Insights into Action’ Programme**
Gas Networks Ireland
- ▶ **Foxrock Age Friendly Business Initiative**
Foxrock Area Community and Enterprise (FACE)
- ▶ **Tirlán Age Friendly Business Recognition Programme**
Tirlán Limited



Slieve Russell Hotel - Inclusive Hotel - Dementia Friendly

The Slieve Russell Hotel believes that true hospitality means welcoming everyone with dignity, respect, and care. In alignment with their commitment to sustainability and their strong social and corporate values, they have made the important decision to become an Age Friendly, Inclusive and Accessible Hotel, a space where all guests, including mature guests and individuals with disabilities, feel safe, comfortable, and valued. As part of this commitment, they are taking steps toward becoming the first Dementia-Friendly Hotel. This initiative is rooted in their dedication to inclusivity and the desire to create meaningful, supportive experiences for all who stay with them. They recognise that a more inclusive environment not only enhances the well-being of guests but also contributes to a more socially responsible and sustainable future. The goal is to provide guests with the respite and support to enjoy quality time together. This transformation is not just about meeting standards; it is about living their values. They are excited to lead by example in the hospitality industry and to continue making The Slieve Russell Hotel a place where everyone feels they are comfortable and supported in luxury.

Gas Networks Ireland 'Insights into Action' Programme

Gas Networks Ireland are committed to putting customers first. This customer first mindset is embedded in their culture, driving their collective ambition to continuously seek opportunities to improve the levels of service that they provide daily to all customers, including in particular older customers. They recognise that user experience is the most valuable resource they can utilise when designing services to best meet the specific and various needs of older customers. The Insights into Action programme is a comprehensive and thoughtful approach to enhancing the customer experience, especially for older customers; comprised of four pillars: Insight - Listening to and Understanding older customers, Communicating insights - As a knowledge share to the broader business and stakeholders, Innovating Solutions - Within the organisation to promote a better understanding of older customer experiences, and to be inspired by service delivery counterparts & Result-Oriented Actions - Implementing initiatives based on older customer's experiences and creating ever-improving channels of access to services. Insights into Action is on-going programme ensuring that older customers' voices are continuously heard, their needs understood and acted upon. The programme creates opportunities for staff and business partners to access and hear what older customers are saying about the service offered to them, informing upskilling, training, and process review. The programme empowers the voice of our older customers, to inform and guide decision-making processes. Gas Networks Ireland strive to ensure that older customers feel represented and valued in the services they offer.



Foxrock Age Friendly Business Initiative

Foxrock Area Community and Enterprise (FACE) group are rooted in the Foxrock local and business community. The group carries out a huge amount of work in the area with the aim of improving their community and enhancing the quality of life for all its residents. Driven by a group of committed volunteers and involving the entire community in a range of events and initiatives, FACE have been very much to the fore of progressing Age Friendly initiatives in the town. Significant work has been carried out, in conjunction with both the Dún Laoghaire-Rathdown County Council (DLRCC) Age Friendly Office and other DLRCC departments, to make changes in the village such as providing Age Friendly parking, and footpath repairs. This is part of an ongoing effort to achieve Age Friendly village status for Foxrock. In 2024 this work resulted in fifteen businesses in Foxrock Village being awarded Age Friendly Charters under the Age Friendly Business Recognition scheme, operated by Dún Laoghaire-Rathdown County council in conjunction with Age Friendly Ireland. FACE engaged with local enterprises to ensure they were provided with the training and support which allowed them to make changes to their businesses that would enhance the experience of their older customers. Foxrock Area Community and Enterprise provides evidence of what can be achieved when business and community work together, and their Age Friendly Business initiative has delivered positive change by generating a positive, age friendly culture in which older customers are valued.



Tirlán Age Friendly Business Recognition Programme

The Age Friendly programme at Tirlán is a strategic initiative aimed at enhancing the retail experience for older adults across its CountryLife and FarmLife store network. Recognising that older customers are loyal, enjoy shopping, and return frequently when treated well, Tirlán is committed to creating a welcoming, accessible environment that meets their needs. This initiative goes beyond compliance—it reflects a genuine dedication to community wellbeing and inclusivity. By partnering with Age Friendly Ireland, Tirlán is embedding age friendly practices into its operations, including staff training, store audits, and practical improvements like accessible parking and in-store supports. Each participating branch appoints an Age Friendly Champion to lead local efforts, ensuring that older customers feel supported and valued. The programme also aligns with Tirlán's broader sustainability and social responsibility goals, reinforcing its identity as a customer-focused, community-driven co-operative. This is a meaningful step in recognising the evolving needs of farmers and customers, and in shaping the Co-op of the Future. 10 stores have Age Friendly status with more working towards their Age Friendly recognition.



Age Friendly Safety & Security Award

Sponsored by An Garda Síochána

Feeling safe and secure at home and when out and about greatly enhances the lives of older people. This category acknowledges the impact of community-based responses that enable older people to feel secure in their homes and in the wider community, and to know what to do when they don't.

Projects Shortlisted in this Category

- ▶ **Safe and Connected**
Age Friendly Cork County
- ▶ **Home Fire Safety Visit Collaboration**
Mayo County Fire Service
- ▶ **St Joseph's House, Waterford**
St Joseph's House, Age Friendly Housing Development



Safe and Connected

This project was initiated as the Cork County Older Peoples Council had identified a need to engage specifically with the local Community Guard. In developing the project, the benefits of including engagement with the two other emergency services, namely the Fire Service and the National Ambulance Service became apparent. Having the three emergency services in one room to present to and engage with older people and their carers would allow for meaningful discussion and targeted issues to be addressed while giving the services the opportunity to promote the work that they are doing, within their organisations to improve outcomes and make things better for older people who engage with the emergency services. Crucially it allows for engagement and discussion with the emergency services at a time when

there is not an emergency. The banking sector were also included following discussion with An Garda Síochána as they are increasingly seeing older people being targeted and victimised through fraud and financial abuse. Engaging with the bank allows for the bank to give pertinent advice on how to stay safe and what to do if a vulnerable person is being taken advantage of financially. The Healthy Age Friendly Homes programme is also engaging with this event to increase awareness of the programme and to engage with potential participants.



Home Fire Safety Visit Collaboration

Mayo County Fire Service and the Healthy Age Friendly Homes Programme have jointly collaborated to improve the safety and well-being of older residents in County Mayo to support them as they continue to live safely in their own homes for as long as they can through the delivery of a free Home Fire Safety Visit. The partnership, the first of its kind in Ireland, sees firefighters from the 12 fire stations in Mayo conducting a home fire safety visit in their local area for older people referred by the Healthy Age Friendly Homes Programme. This brings a more local and caring dimension from a service that people trust in their community. Both agencies developed and signed A Protocol of Cooperation to facilitate referrals to the Fire Service with consent from clients for a Home Fire Safety Visit. This joint protocol covers, inter alia, information sharing, training and education, confidentiality, and evaluation, and is a growing and evolving service due to the collaboration of both parties with regular feedback and review.

St Joseph's House, Waterford

St Joseph's House is a former religious convent constructed by the Little Sisters of the Poor in 1874 who dedicated their lives to caring for the older people. The site comprises of the Main Convent Building, Courtyard Buildings, Presbytery Building, School House and the Gate House. In 2010, The Little Sisters vacated the site to move to a purpose built facility in Waterford and the site on Manor Hill had since been mostly vacant since then until Walsh & Sheehan Investments purchased the site in 2019. Discussions then took place with Waterford City & County Council with the proposal to refurbish the main house along with the ancillary buildings using the Repair and Lease scheme (RLS). St Joseph's House was a landmark building with an elevated position which was in need of significant attention to mitigate further significant deterioration. Planning was granted for the development in August 2021 and in December 2021 works commenced onsite and concluded in June 2023 when the 71 units were handed over the Waterford City & County Council (W.C.C.C.). The building was officially opened on 16th June 2023 by Minister for Housing Darragh O'Brien and on 28th July 2023 the keys for the first unit were handed out with full capacity achieved in January 2024.

Age Friendly Communication Award

Sponsored by An Post

A lack of access to information is often cited as a barrier to 'ageing well' in Ireland. The ability to access clear and concise information can impact on a range of an older person's life, from health and wellbeing to social connectedness to financial security. This award recognises efforts being made around the country to bridge the information gap.

Projects Shortlisted in this Category

- ▶ **Carlow Older People's Council Information Hub**
Carlow Older People's Council
- ▶ **Limerick Libraries Digital Tablet Lending**
Limerick City and County Libraries
- ▶ **Hi Digital- Intergenerational projects**
Irish Girl Guides

Carlow Older People's Council Information Hub

The Carlow Older People's Council Information Hub is a dynamic initiative aimed at improving access to relevant, up-to-date information for older people in County Carlow. Developed by the Carlow OPC in partnership with Carlow County Council and Age Friendly Carlow, the Hub provides a drop in one-stop resource where older residents can easily find services, entitlements, supports, and events tailored to their needs. The Hub offers both digital and printed formats, and in person one to one supports ensuring accessibility for older people of varying digital literacy levels. It acts as a centralised point of reference for health, housing, transport, social inclusion, and local services. Through community engagement and feedback, the content is updated regularly to reflect current offerings and priorities. The project not only bridges the information gap but also empowers older people to make informed choices and remain active participants in their communities. It embodies the values of the Age Friendly Programme by placing older people at the heart of its design and delivery.

Hi Digital- Intergenerational projects

Irish Girl Guides is a charity partner in the Hi Digital programme, an initiative of the Vodafone Foundation that empowers people aged 65+ by building essential digital skills that help reduce isolation and enhance well-being. Here in Mitchelstown, we have been running a Hi Digital programme with the local community for the last two years. 25 members of our Girl Guides provide practical support to older people in the community, helping them to understand technology and fostering independence and connectivity. To date, over 60 older adults have been trained, impacting countless lives and advancing community well-being and social equity. It was inspiring to see students from the Munster Technology University using creativity and empathy to support older adults with cyber safety. Being featured on RTE's 10 things to know was a wonderful bonus-this is exactly the kind of intergenerational innovation we need more of. The futureECOS project, funded by Interreg Europe, aims to explore innovative ways to future-proof living spaces across its partner regions. As part of this initiative, Inclusive Living was chosen, and the one standout example of Inclusive Living is the HI Digital initiative.

Limerick Libraries Digital Tablet Lending

The objective of the scheme is to eliminate barriers and to enable older people to access the digital world. 42 Nokia T20 Tablet devices with pre-loaded mobile data are available for loan across the Library network. This scheme is targeted at older people who wish to try out mobile digital technology. Participants who borrow the Tablets can also access online library resources such as digital books & audio books in addition to the Hi Digital course. Hi Digital is a self - directed learning course aimed at the older user and has been developed by Vodafone Ireland Foundation in collaboration with Alone. Pop up tuition sessions are also provided at a number of libraries.



Age Friendly Environment Award

Sponsored by the Centre for Excellence In Universal Design

The built environment has a unique impact on the lives of all older people. Simple things like adequate public seating, level footpaths and appropriate crossing times at pedestrian crossings all have a huge impact on the ability of older people to be active in their towns and villages. This category recognises projects that bring about change in the built physical environment with older people in mind.

Projects Shortlisted in this category

- ▶ **EnergyCloud Age Friendly Pilot Cork City**
EnergyCloud Ireland
- ▶ **Ardee Garden Care and Repair Project**
Age Friendly Louth
- ▶ **Towards Age Friendly Healthcare – Walkability Study of Clondalkin Primary Care Centre**
South Dublin Older Person's Council



EnergyCloud Age Friendly Pilot Cork City

The EnergyCloud Age Friendly Initiative, launched in Cork City on April 7th, 2025, is a collaborative effort between EnergyCloud Ireland, Cork City Council, and Cork City Age Friendly. This pilot project aims to address energy poverty among older residents by redirecting surplus renewable energy from wind farms to provide free hot water. By installing smart devices in the homes of 40 older adults, the initiative reduces energy costs and supports Cork City Council's Climate Action Plan. This innovative approach not only alleviates economic hardship but also promotes environmental sustainability. The project demonstrates how local government, social enterprises, Age Friendly Ireland and communities can work together to create age friendly solutions that champion climate action.



Ardee Garden Care & Repair Project

The Ardee Garden Care and Repair Project is a community-driven Age Friendly initiative designed to support older residents in Ardee and surrounding rural areas to live safely, independently and with dignity in their own homes. Established through a partnership between Age Friendly Louth, Ardee Tidy Towns, An Garda Síochána and DeeHub, the project delivers practical, low-cost garden maintenance and minor outdoor repairs for older people who may be unable to carry out the work themselves due to age, mobility or health challenges. This initiative addresses a critical yet often overlooked need for safe, accessible and well maintained outdoor spaces. Tasks range from grass cutting, weeding and hedge trimming that enhances safety and reduces the risk of trips and falls. By improving the physical environment, the project promotes both mental wellbeing and personal pride, reducing isolation and increasing quality of life. What sets the project apart is its community ethos. Local volunteers, some of whom are older adults themselves, work side-by-side with service users, creating a powerful sense of solidarity, social connection and mutual respect. The service is flexible, discreet and designed around the needs of each individual. Now in its second year, the project has supported dozens of older people, with overwhelmingly positive feedback. It embodies the Age Friendly principles of participation, inclusion and respect—demonstrating how small, well-targeted interventions can make a lasting impact in the lives of older citizens.

Towards Age Friendly Healthcare – Walkability Study of Clondalkin Primary Care Centre

The Health Service Executive (HSE), aligned with the national Sláintecare strategy, aims to transform healthcare by bringing services closer to communities and supporting healthy ageing. With Ireland's aging population, it is crucial that healthcare environments accommodate older adults' specific needs. The Age Friendly framework guides the design of Primary Care Centres and Integrated Care Hubs to ensure they are accessible, welcoming, and supportive, ultimately enhancing patient experience, promoting independence, and reducing hospital admissions. To ensure meaningful input from older adults, the South Dublin Older Persons' Council was engaged in a collaborative walkability study of the Clondalkin Primary Care Centre, using the Age Friendly Ireland guide "Towards Age Friendly Primary Care Centres." This study involved service users, staff, HSE Estates, and Age Friendly representatives to identify practical improvements in accessibility, signage, seating, and wayfinding. Resulting enhancements included colour-coded floor signage with larger fonts, local landmark images, armrest-equipped seating, and health promotion videos in waiting areas. A key insight was the importance of integrating Age Friendly principles early in design to benefit all users and avoid costly retrofits, exemplified by challenges with parking bay dimensions. The project highlights that systematic incorporation of Age Friendly design, combined with early stakeholder engagement, is vital for creating inclusive healthcare environments. The walkability study demonstrated effective co-production, supporting the HSE's Better Together Roadmap. It is recommended that this collaborative approach be shared across HSE regions to improve accessibility, patient experience, and inclusivity in primary care settings nationwide.

Age Friendly Community Innovation Award

Sponsored by the Department
of Rural & Community
Development

The voice of the older person is at the heart of the Age Friendly Cities and Counties Programme, the Programme is designed and implemented with them and not for them. This award recognises those innovative projects that are driven by older people for older people. These projects not only enhance the lives of older people but benefit the community at large.

Projects Shortlisted in this Category

- ▶ **Hearth – Art for Older People at Home**
Breda Mayock and Deirdre Walsh
- ▶ **60+ Climate Drive**
Galway County Council Climate Action Team
- ▶ **Creative Christmas Connections**
Age Friendly Kilkenny
- ▶ **Together we are stronger**
Annette Fox and Niamh Murphy

Hearth – Art for Older People at Home

Hearth brings art into the homes of older people who are isolated/restricted either geographically or for other reasons. A professional artist, experienced in working with older people, visits to the home of the older person weekly and facilitates a one-to-one art workshop. All art materials and equipment are supplied. The participants are guided and mentored in the process of making drawings, paintings, looking at art books and looking to nature for ideas and inspiration. Hearth has operated in Co. Mayo since 2009 in Achill, Claremorris, Ballinrobe, Castlebar, Westport, Crossmolina and Belmullet over the years. The target audience for the project is Older People who are living in an isolation. The aim is to enable the participant to explore their creativity in the safety of their own homes. The biggest achievement is in hearing participants speak about the light and positivity it has brought to their quiet and often lonely days. Hearth has found that feelings of loneliness and depression have been lifted for participants through engagement

with artwork – participants, their family members and the artist/facilitators have reported this to be true. The group exhibitions and get togethers also encourage communication and friendship.

Vulnerable Persons Programme

The aim of this programme is to identify and facilitate a timely responsive/ intervention for hard to reach vulnerable persons, with advanced needs, and offer ongoing support in the community thereafter. Members of Tallaght Community Policing Unit noted that elderly members of the community, who had advanced dementia and Alzheimer's, were at particular risk during this time due to the isolation and lack of support. The Community Policing team called to these people on a daily basis to offer assistance, support and company. Gardai became aware due to resource limitations, that this was not a long-term solution, and observed a number of the vulnerable people were not linked to the relevant medical services, and were at

risk of falling through the cracks in the system, for a variety of reasons. This brought members of An Garda Síochána into contact with a number of state bodies, one of which was the Integrated Care Team for Older People (ICPOP), which was located in Tallaght Hospital. ICPOP made Gardaí aware that they have a number of high risk persons, both in their care and at home, refusing treatment in the Tallaght/Clondalkin area. A voluntary vulnerable person's database was created, in order to give structured access to information, and ensure no person that was identified, was forgotten. This data base quickly evolved to included emergency contacts, frequented places, GP details and brief medical history and next of kin in case an emergency incident occurred. A statement of purpose was also created, in order to facilitate the sharing of information between organisations, and to put in place a structure, including weekly meetings and quarterly formal steering group meetings. This pilot programme was then named the Vulnerable Persons Programme. A vulnerable person register was established in Tallaght Garda Station, which is used to store all data in relation to this project, including service users and essential documents.

60+ Climate Drive

Jacinta Barins passionately advocates that “tackling climate change is not just for the young.” A retired United Nations official, Jacinta has dedicated her post-retirement years to climate education and activism, especially among older generations. Her mission is clear and compelling: to bring a wide cohort of the Irish public up to speed on what climate change truly is, and to empower individuals—especially those over 60—with the tools and knowledge to reduce their carbon footprint in practical, everyday ways. All this work is done on a completely voluntary basis by Jacinta. Her passion and drive is clear to see and she is inspirational to so many showcasing how one person can make such a positive change and impact on others in regards to climate action.

Creative Christmas Connections

Following a survey conducted by the Age Friendly programme team and in consultation with the Older People's Council a distinct need was recognised to provide access to creative fun activities for older

people around Christmas time. Older people identified through the survey that social participation was especially important in the lead up to Christmas. To encourage social interaction and enhance community connections the Age Friendly Programme team in collaboration with Creative Ireland ran a series of Creative Christmas Connections workshops in 2024. The workshops were primarily aimed at older residents in rural areas of Kilkenny. The programme had a strong focus on improving well-being by providing creative opportunities such as story-telling, music and craft workshops. People were encouraged to bring a friend or family member to participate with them and the events were free of charge. The project was based on providing creative opportunities in a relaxed atmosphere and for older people to make new or renew community connections. The workshops enhanced social inclusion among older adults. Participants reported feeling more connected, valued and encouraged to attend more events. Through conversations at the events and the evaluation process, more ideas were fostered for future workshops with the potential to engage a wider cohort of the community through this pop-up outreach process. Overall, the initiative has successfully promoted a more inclusive and supportive environment. The key takeaway from the project highlighted the importance of human connections, communication and conversation which underpinned the varied and multiple activities conducted in this project.



Together we are stronger

‘Together We are stronger’ is the ethos of our collaborative supports for older persons in Carlow.

‘Together We are Stronger’ developed key supports, including hospital care bags and emergency boxes. The Hospital bags for men and women contain night dresses/pyjamas (sizes s to xxxl), water, wipes, a pack with toothbrush, toothpaste, ear plugs, eye mask, vaseline, toiletries, a small towel etc. Also included are a note book and pen and a list of key services. Emergency boxes are designed for distribution to older persons when there is an extreme weather event. These include gloves, socks, hats, warm blanket as well as nutritious food which should last a few days. A torch, flask, hot water bottle, hand warmers and security alarm are also included. A list of emergency numbers and contacts is also included. All are stored in a sturdy plastic tub on wheels.

Age Friendly Housing Award

Sponsored by the Department of Housing, Local Government and Heritage

As people age, they spend more time in their own homes. This means that older people's quality of life, and thus their health, can depend on the appropriateness of their home environment and the conditions in which they live. This award recognises innovative housing initiatives that enable older people to remain independent for as long as possible.

Projects Shortlisted in this Category

- ▶ **Baile an Róigh**
Wexford County Council
- ▶ **Bowden Court**
Fingal County Council
- ▶ **Cuirt an Troisc**
Donegal County Council Architects Department

Baile an Róigh

Social housing scheme of 35 units, with a variety of unit types, incorporating a variety of Age Friendly layouts and features. This scheme of 35 units was delivered in two phases. Phase 1 was completed in 2022 and Phase 2 was completed this year. There are 15 x 3 bed, 2 storey houses (Type A). There is 1 Type B which is a 3 bed adapted bungalow. There are 4 x 3 bed bungalows (Type C) and there are 15 x 2 bed bungalows. This Type D is the most appropriate Age Friendly unit but all units incorporate UD principles where possible. They offer adaptability and provide lifetime homes. The key features included are:

- 1 The site and all units are accessible
- 2 Level access to private outdoor space
- 3 Min 1200mm corridor with clear access space around beds and furniture
- 4 1500mm clear space by the front door in hallway
- 5 All units 2 bed or greater
- 6 Accessible bathrooms
- 7 Very energy efficient homes with Heat Pumps and Heat Recovery Ventilation.
- 8 All outlets, switches and controls are accessible
- 9 Passive surveillance of the site and all units
- 10 Easy to use fixtures and fittings provided

Bowden Court

Bowden Court is a high-quality social housing development delivered by Fingal County Council on Rathbeale Road, Swords approximately 1.2 km northwest of Main Street, Swords. Developed on the site of a former Operations Depot, the scheme comprises eleven spacious, age friendly apartments designed in accordance with universal design principles. The accommodation includes a balanced mix of three three-bedroom, four two-bedroom, and four one-bedroom units distributed over three floors. The development promotes intergenerational living and social inclusion, particularly supporting older tenants through the provision of accessible homes and proximity to essential amenities. Residents benefit from convenient walking access to services such as the Swords Cultural Quarter,

shops, a local church, health, and senior social centres, as well as robust public transport links. A landscaped communal garden located at the northwest corner of the site provides a secure and inviting outdoor space, encouraging social interaction, and fostering a keen sense of community among residents. Bowden Court contributes meaningfully to meeting local social housing needs by providing durable, inclusive homes that support residents' long-term wellbeing. Completed in September 2024, the development welcomed its first residents by December of the same year. The project was designed by Fingal County Council's Architects Division and delivered in collaboration with a multidisciplinary consultant team led by Paul Keogh Architects.



Cúirt an Troisc

Cúirt an Troisc is an exemplar age friendly housing development that transforms a vacant infill site into a high-quality residential scheme for older people. It provides 19 energy-efficient, double-aspect apartments designed to Universal Design standards. Located close to transport, shops, and essential services, the development promotes independent, connected living. Homes are arranged around a central landscaped courtyard, encouraging social interaction and reducing isolation. Private outdoor space is included through gardens, terraces, and balconies, accessible from both living rooms and bedrooms. A bright, shared internal communal space offers residents a warm, accessible environment for

gathering, events, and informal connection, helping to create a strong sense of community. The homes are designed with future care needs in mind. Layouts are fully adaptable and include interconnecting bedrooms and bathrooms. This allows for easy installation of hoist systems or other assistive technologies if required over time. Sustainability is built-in, with air-to-water heat pumps and durable, low-maintenance materials that reduce environmental impact and long-term costs. A dedicated Healthy Age Friendly Homes Local Coordinator continues to support residents, linking them with services and supports. Cúirt an Troisc offers a replicable model of compact, sustainable, age friendly housing.

Sponsors



Judges Special Recognition Award |

IPB Insurance

IPB Insurance takes great pride in sponsoring the Special Recognition Award, recognising excellence in Age Friendly initiatives by Age Friendly Ireland. IPB Insurance is proud to be Irish-owned and is the only indigenous mutual general insurance company in the Irish market. We specialise in bespoke insurance solutions within our core public service, education and health market segments and are now one of the largest liability insurers in the market. An experienced underwriter of major liability, property and motor risks, we insure some of the largest risks in the State in the public sector and complementary markets in the semi-state and private sectors. IPB Insurance is dedicated to safeguarding its Local Authority and ETB members, as well as communities across Ireland. As a Local Authority shared service, IPB Insurance applauds Age Friendly

Ireland for its impactful work, emphasising inclusivity and universal design to enhance communities.

Community support lies at the core of IPB's values, and as the pioneering company to issue a social dividend to Irish society through Corporate Social Engagement (CSE), we are thrilled to extend our support to this prestigious award. Together, we strive to make a positive impact on the well-being of our communities.





Explore Age Friendly Galway

Welcome to County Galway—a place where the wild Atlantic meets ancient landscapes, where vibrant culture and living tradition are woven into every experience, and where every visitor is greeted with a céad míle fáilte.

County Galway is a land of endless adventure and discovery. Stretching from the dramatic peaks of Connemara to the tranquil waters of Lough Derg, the county is a treasure trove of unforgettable sights and experiences. Here, you can hike through the heather-clad mountains of Connemara National Park, where wild ponies roam and panoramic views stretch as far as the eye can see. The iconic Kylemore Abbey, nestled beside a shimmering lake, invites you to explore its Victorian walled gardens and rich history. Along the

Atlantic coast, the Sky Road offers one of Ireland's most scenic drives, with breathtaking ocean vistas and charming villages waiting to be explored at every turn.

No visit to Galway is complete without experiencing the magic of the Aran Islands. On Inis Mór, Inis Meáin, and Inis Oírr, time seems to slow down. Here, stone forts perch on dramatic cliffs, sandy beaches beckon, and the Irish language is alive in daily life. Cycling along quiet lanes, discovering the ancient Dún Aonghasa, and enjoying traditional music in island pubs are just some of the ways to immerse yourself in this unique corner of Ireland.

The Gaeltacht regions of Connemara and South Galway are the beating heart of Irish tradition. In these areas,





you can enjoy lively music sessions, sean-nós dancing, and storytelling in local pubs and community halls. Artisan workshops and craft markets abound, offering the chance to meet makers of pottery, knitwear, and jewellery, and to take home a piece of Galway's creative spirit.

Galway's heritage towns and villages each have their own unique story to tell. In Loughrea, Portumna, Tuam, Ballinasloe, Gort, and many more, you'll find medieval walls, castles, vibrant festivals, and bustling markets. Athenry invites you to walk its medieval town walls and visit its impressive Norman castle, while Portumna offers the tranquil beauty of Lough Derg, perfect for boating, angling, and watersports.

For those who love the outdoors, Galway is an adventure playground. The county boasts an ever-growing network of greenways and blueways, including the Galway to Clifden Greenway and the Beara-Breifne Way, ideal for walking and cycling. Watersports enthusiasts can try kayaking, paddleboarding, or wild swimming on Galway's lakes, rivers, and coastline. Anglers will find world-class fishing on Lough Corrib and along the River Shannon, while golfers, horse riders, and thrill-seekers can enjoy a wide range of activities across the county.

Galway's calendar is packed with world-class festivals and events. From arts and music to food and literature, there is always something happening. The Clifden Arts

Festival, Ballinasloe Horse Fair, and countless local food and craft fairs celebrate Galway's creative spirit and bring communities together in joyful celebration.

Food lovers will be delighted by Galway's culinary scene. Fresh seafood, artisan cheeses, and local produce are served in award-winning restaurants, cozy cafés, and lively farmers' markets. Traditional pubs offer the perfect setting to enjoy a pint and a tune, while the county's growing craft beer and distillery scene adds a modern twist to its hospitality.

County Galway is a place for everyone. Families, couples, solo travellers, and groups all find their own adventure here. With accessible attractions, family-friendly activities, and a warm welcome in every town and village, it's the perfect destination for making memories that will last a lifetime.

Galway County Council is proud to champion tourism as a vital part of our local economy and community life. Through the Galway Tourism Strategy 2023–2031, the Council is investing in sustainable tourism infrastructure, supporting local businesses and festivals, and promoting Galway's unique culture, language, and natural heritage to the world. The Council's vision is to ensure that tourism brings benefits to every corner of the county, from our most famous landmarks to our hidden gems, and that Galway remains Ireland's leading destination for natural and cultural heritage.



Galway City

Galway – a uniquely located city on Ireland’s west coast along the Wild Atlantic Way, at the edge of Europe.

Galway, The City of the Tribes is a unique Medieval City that was once part of a superhighway of trade that linked the ports of Europe. Renowned for its festivals and diversity, and regarded as a cultural gem, it is an attractive, walkable city interwoven with waterways. It is a key access point to the Wild Atlantic Way. It houses a preserved street pattern, cobbled streets, laneways, medieval walls and

treasures with fascinating history and character; yet is intertwined with a modern, vibrant, diverse bustling centre, located along the banks of the River Corrib whose stony bed (Gaill Aimh) gave the city its name. Home of University of Galway and the Atlantic Technological Institute, Galway has over 20,000 third level students, a dynamic med-tech, marine and creative industries hub. Galway is a designated UNESCO City of Film, a European City of Culture and global travel pioneers The Lonely Planet named Galway as one of its Top Ten Cities Worldwide to visit in 2020.

The city is surrounded to the West by a breath-taking coastline and the picturesque, rugged Connemara landscape. This area features some of the most significant geological and ecological sites in the world, including a UNESCO Geo Park and Connemara National Park; several offshore islands including Oileáin Árann (Aran Islands) and Inishbofin; and spectacular mountain ranges such as the Twelve Bens. Lough Corrib, the second largest lake in Ireland covering over 16,000 hectares, lies to the north of Galway City.

Galway is Ireland’s only official bi-lingual city. The Gaeltacht areas and Irish speaking communities in Galway make it a uniquely bi-lingual region which fosters Irish language heritage and culture in many forms that have influenced daily life, from culture and traditions, music, language, dialect, and the vernacular buildings.

The city attracts visitor that are increasing discovering Galway as a destination for great food. From our ripe land & rich marine life, Galway provides high quality produce and in 2018 was designated a European Region of Gastronomy, reflecting over 30 years of dedicated work by our food community.





Thank you to everyone who took the time to submit a project for the 2025 Age Friendly Recognition and Achievement Awards.

Age Friendly Ireland
Meath County Council, Buvinda House
Dublin Road, Navan, Co. Meath

w www.agefriendlyireland.ie
www.agefriendlyhomes.ie

